

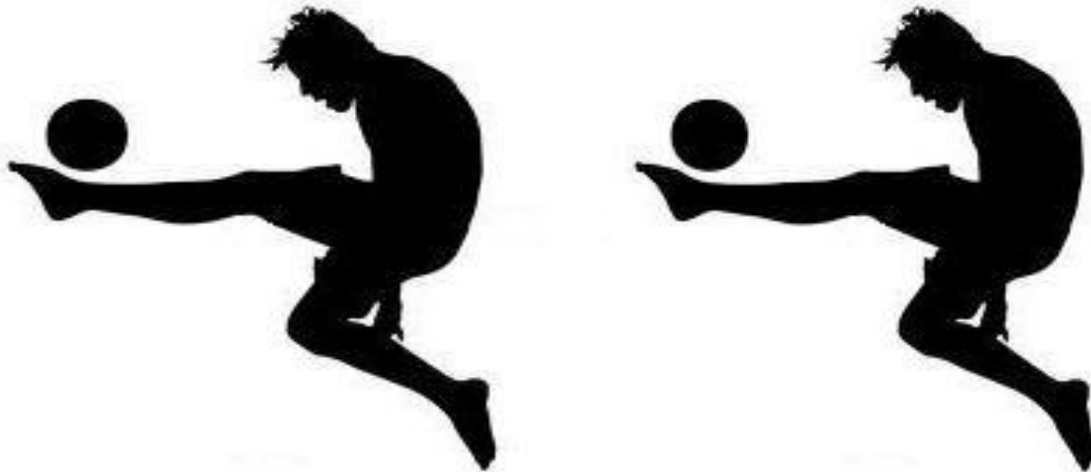


# Saint Lucia Football Association

## SECONDARY SCHOOLS GIRLS FOOTBALL CHAMPIONSHIP RULES AND REGULATIONS

### 2015 EDITION

The SLFA/Ministry of Youth Development and Sports



**TABLE OF CONTENTS**

**PAGE**

<b>Preamble</b>	<b>4</b>
<b>1. Laws of the Game</b>	<b>5</b>
<b>2. Registration of Players</b>	<b>5-7</b>
<b>3. Youth Tournament</b>	<b>7-9</b>
<b>4. Transfers</b>	<b>10</b>
<b>5. Referees, Assistant Referees &amp; Fourth Officials</b>	<b>10-11</b>
<b>6. Cautions</b>	<b>11-12</b>
<b>7. Duration of Matches</b>	<b>12-13</b>
<b>8. Competition Format</b>	<b>13</b>
<b>9. Conduct of Officials, Players &amp; Spectators</b>	<b>13-19</b>
- Responsibility of Schools	
- Release of Players for National Team	
- Responsibilities of Players	
- Ineligibility	
- Offensive & Racist Behavior	
- Unidentified Aggressors	
<b>10. Responsibilities of the Home Team</b>	<b>19-20</b>
- Grounds	
- Technical Area	
<b>11. Transportation</b>	<b>20</b>
<b>12. Equipment</b>	<b>21</b>
<b>13. Postponement of Matches</b>	<b>21-22</b>
<b>14. Protest</b>	<b>22-23</b>
<b>15. Match Suspension</b>	<b>23-24</b>

<b>16.Withdrawals</b>	<b>24-25</b>
<b>17.Economic Sanction</b>	<b>25-26</b>
<b>18.17. Abandoned Match</b>	<b>26</b>
<b>19.Report of Misconduct</b>	<b>26-27</b>
<b>20.Definition of Misconduct</b>	<b>27-29</b>
<b>21.Penalties in Relation to Misconduct</b>	<b>29-31</b>
<b>22.Right to Personal Hearing</b>	<b>31-32</b>
<b>23.Unlawfully Influencing Match Results</b>	<b>32</b>
<b>24.Appeals</b>	<b>33</b>
<b>25.Colors</b>	<b>33-34</b>
<b>26.Disciplinary Committee</b>	<b>34-35</b>
<b>27.Appeal Committee</b>	<b>35</b>
<b>28.Disciplinary Law &amp; Procedures</b>	<b>36</b>
<b>29.Match Balls</b>	<b>37</b>
<b>30.Hosting S.L.F.A. Matches</b>	<b>37-38</b>
<b>31.Matters not provided for</b>	<b>38</b>
<b>32.Scope of Application, Natural &amp; Legal Persons</b>	<b>38</b>
<b>33.Organizing Committee</b>	<b>38-39</b>
<b>34.Commercial Refereeing to Event &amp; Advertising Provisions</b>	<b>39</b>

<b>35.Competence of S.L.F.A.</b>	<b>39</b>
<b>36.Definitions</b>	<b>40</b>
<b>37.Gender &amp; Number</b>	<b>40</b>
<b>38.Anti Doping</b>	<b>40-41</b>
<b>39.Ties</b>	<b>41</b>
<b>40.Competition Format</b>	<b>41</b>

**Preamble**

- a. The Secondary Schools Girls Competition is an Official event of the Saint Lucia Football Association and the Ministry of Youth development and Sports
- b. The 2015 Secondary School’s Girls Championship serves as a National Competition
- c. This competition is played at the District level.
- d. Any rights that these regulations do not cede to a District shall belong to the Saint Lucia Football Association.

**I. Title – Secondary Schools Girls Championship**

- a.** The Secondary Schools Girls Championship shall take place in 2015

# **Rules & Regulations for Inter District Under 17 Competition 2014**

## **Rule 1**

### **LAWS OF THE GAME**

- (a) All competitions shall be played in accordance with the Rules & Regulations of the S.L.F.A. and the Laws of the game set out by FIFA.
- (b) Any person found guilty of infringing the Laws of the Game as in (a) shall be guilty of an offence.
- (c) Any natural or legal person found guilty of infringing the Rules & Regulations for Competition 2014 as in (a) shall be guilty of an offence

## **Rule 2**

### **REGISTRATION OF SCHOOLS /PLAYERS**

- (a) All Schools must register their teams and players with the Saint Lucia Football Association (S.L.F.A.).
- (b) Team registration free.
- (c) Late team registration penalty fee of \$100.00 shall apply effective 7 days after the deadline for registration. Late registration penalty fees of fifty dollars (\$50.00) shall apply for individual players.

- (d) There shall be no registration at the end of the First Round.
- (e) Registered players **Must** present a picture ID at every match.
- (f) Team's registration is 30 players or less. Additional players shall be fifty (\$50.00) dollars per player.
- (g) 1. Any Team which permits the playing of an unregistered player at any time or a player who has previously registered and played for another Team in the last two years shall be liable to disciplinary action.  
  
2. Any team who has won or gained any points with an unregistered player(s) as outlined shall automatically forfeit all points, and the opposing team shall be awarded the points.
- (h) Players can only represent one School in the Competition year.
- (i) The competition year shall be from January 1<sup>st</sup> – December 31<sup>st</sup>, 2015.
- (j) Any School which withdraws from the competition shall be liable to disciplinary action by the S.L.F.A.
- (k) All players and substitutes must be named on the match card before the start of the match.
- (l) Only the players on the match card shall be allowed to participate in the match.
- (m) A maximum of twenty (20) players will be allowed on the match card.
- (n) A maximum of twelve (12) persons shall be allowed on the team bench, three (3) Team Officials and nine (9) substitutes the names of these persons and their function must be indicated on the relevant form provided prior to the start of the match.
- (o) All Teams must present their match card to the match official at least thirty (30) minutes before the start of the match.
- (p) Should any nominated player or substitute sustain an injury after the submission of the official Team sheet to the Referee and before the kick off, he may be replaced, provided that the Referee and opponents are informed before the commencement of the match.
- (q) In Semi-Finals and Finals: All Teams must provide a list of the names of players taking part in the game (including the name of substitutes) to the Referee and a representative of their opponents in the presence of the Referees or Assistant Referees NO LATER than four (4) hours before the start of the match.

- (r) Any person or team who infringes this section shall be guilty of an offence, and shall be subjected to disciplinary action.
- (s) All those who are subject to the Rules and Regulation for Competition in 2014 their registration has an effect on the right of participation in other Competition unless the regulation in question stipulate otherwise.
- (t) Players must be registered with the S.L.F.A to play S.L.F.A. football. Only registered Club/Players can play organized Football. By the act of registering, Players agree to abide by the statutes and regulations of F.I.F.A, the confederation and the S.L.F.A.

### **Rule 3**

#### **YOUTH TOURNAMENTS**

- a) In tournaments organized by the S.L.F.A. in which there are age qualifications, any team which plays an over aged player shall automatically forfeit all the points gained in those matches in which the players appeared.
- b) The team shall also automatically forfeit any prizes and allowances paid to it by the S.L.F.A. and will be liable to disciplinary action imposed by the S.L.F.A. (such action may include a fine and/or suspension from the said competition and/or banning from participating in future competitions).
- c) Any Team having any player registered who is over the age required for a competition but whether or not that player plays shall be automatically fined.
- d) Any over aged player who knowingly allows him/herself to be registered shall be automatically banned from all competitions held under the auspices of the S.L.F.A. for at least one playing season.
- e) A player shall be disqualified from playing if he/she *shall attain the age in the year of competition.*
- f) The team shall actively vet the age of players shown on the identity card they produce at competitions that are subject to age limits.
- g) Each participating team must be in possession of a legal individual document containing an up dated photograph and giving full particulars on the date of

birth, month, and year of the player. If the player is not in possession of a legal individual document he/she shall not be allowed to participate in the tournament unless otherwise approved by the S.L.F.A. Executive

- h) Each participating team shall ensure that all of the players in its representative team were born on or after January 1<sup>st</sup>.
- i) Players selected for a representative team participating in age competition shall not be allowed to play for a lower age limit, once the player has played for a higher age limit, even if still eligible by age.
- j) Each Team shall be responsible for producing its player's legal individual document as in Rule 3 (g) above when requested to do so by the S.L.F.A.

### **Rule 3 (i)**

#### **Protection of minors**

1. Transfers of players are only permitted if the player is over the age of 18.
2. The following three exceptions to the rule apply:
  - a) The player's parent's move to an Area/ District/Community which the new club is located for reasons not linked to football.
  - b) The transfer takes place within the Saint Lucia Football Association (SLFA) and the player is aged between 16 and 18. In this case, the new club must fulfill the following minimum obligations:
    - I. It shall provide the player with an adequate football education and/or training in line with the highest national standards.
    - II. It shall guarantee the player an academic and/or school, education and/or training, in addition to his football education and/or training, which will allow the player to pursue a career other than football should he cease playing professional football.
    - III. It shall make all necessary arrangements to ensure that the player is looked after in the best possible way.
    - IV. It shall, on registration of such a player, provide the SLFA with proof that its complying with the aforementioned obligations;



C) The player lives no further than 5km from the district the club with which the player wishes to be registered in the neighboring league is also within 5km of that district. The maximum distance between the players domicile and the clubs headquarters shall be not more than 10km. in such cases, the player must continue to live at home and the two leagues concerned must give their explicit consent.

3) The conditions of this article shall also apply to any player who has never previously been registered with a club and is not a national of St. Lucia in which he wishes to be registered for the first time.

4) Every transfer according to paragraph 2 and every first registration according to paragraph 3 is subject to the approval of the SLFA for that purpose. The application for approval shall be submitted by the association that wishes to register the player. The former association shall be given the opportunity to submit its position. The SLFA approval shall be obtained prior to any request from a club for a Transfer Certificate and/or a first registration. Any violation of this provision will be sanctioned by the Disciplinary Committee in accordance with the FIFA Disciplinary Code. In addition to the association that failed to apply to the SLFA, sanctions may also be imposed on the former club for issuing an International Transfer Certificate without the approval of the SLFA as well as on the clubs that reached an agreement for the transfer of a minor.

## **Rule 3(ii)**

### **Registration and reporting of minors to academies**

1. Schools that operate an academy with legal, financial or de facto links to the club are obliged to report all minors who attend the academy to the association upon whose district the academy operates.
2. Each district is obliged to ensure that all academies without legal, financial or de facto links to a club.
  - a) Run a club that participates in the relevant national championships; all players shall be reported to the association upon whose district the academy operated with the club itself; or
  - b) Report all minors who attend the academy for the purpose of training to the association upon whose district the academy operates.
3. Each association shall keep a register comprising the names and dates of birth of the minors who have been reported to it by the clubs or academies.
4. Through the act of reporting, academies and players undertake to practice football in accordance with the FIFA Statutes, and to respect and promote the ethical principles of organized football.
5. Any violations of this provision will be sanctioned by the Disciplinary Committee in accordance with the FIFA Disciplinary Code.
6. Shall also apply to the reporting of all minor players who are not nationals of St. Lucia in which they wish to be reported.

## **Rule 4**

### **TRANSFERS**

- (a) The Transfer period shall be from January 1<sup>st</sup> to April 30<sup>th</sup>, of the competition year.
- (b) Players who are registered with an overseas association shall not be allowed to register with any Club/team once the player has not received an International Transfer certificate from his overseas Association or club.
- (c) Players who have played for any Club during the last two (2) years and wish to play for another Club in the following year **MUST** first obtain a transfer certificate from the **Club** they are leaving and endorsed by the S.L.F.A.

## **Rule 5**

### **REFEREES, ASSISTANT REFEREES AND FOURTH OFFICIALS**

- (a) The Referees and Assistant Referees chosen for the matches shall be as far as possible be from a Club whose team is not included in the same group as the match in question. They shall be selected from the list of National referees' and assistant, referee issued by the S.L.F.A.
- (b) The S.L.F.A. Referees' Committee shall appoint the referees and assistant referees for the matches in all phases.
- (c) The S.L.F.A. Referees' Committee decision shall be final and not subject to appeal.
- (d) After each match the referees shall complete an official S.L.F.A. report form. He/she shall hand it over immediately after the match to the Match Commissioner or the General Coordinator at the venue which they must send to the S.L.F.A.'S General Secretariat within 48 hours after the match.
- (e) All officials must display a high level of professionalism throughout the competition.
- (f) All match officials must be present one hour before the match.
- (g) A thirty 30 minutes grace period is allowed for Referees, Assistant Referees, and Fourth Officials after the present time as in (5) (f).
- (h) If after the 30 minutes, the referee is not present the most Senior Assistant shall become the referee.

- (i) If a referee or assistant referees becomes unfit before or during a match through illness etc. and is unable to continue to officiate, he/she is replaced by the most senior official.
- (j) Referees, and assistant referees must arrange to arrive at the venue on time.
- (k) On his/her report the referee shall note all occurrences in as much detail as possible on incidents before, during, or after the match, such as:
  - i. Misconduct of players, leading to caution or expulsion
  - ii. Unsporting behavior by officials, members, supporters or anyone carrying out a function at a match on behalf of Club.
  - iii. Misconduct relating to caution, sending off offences other misconduct by players and misconduct by Team officials, or spectators at all times.
  - iv. Any other incident.
- (L) The S.L.F.A. has decided that all Match Officials in all S.L.F.A. Competition shall be required to wear traditional plain black shirts, with white collar and black shorts. Match Officials who have been awarded the S.L.F.A. or FIFA Badge are to wear either (or both) on their Referee's shirt when officiating in any S.L.F.A. Competition where no such award has been made Match Officials is to wear the badge of their present league and not that of any other competition.
- (M) Registered Referees shall not officiate in any Competition, which is not sanctioned, or in any match in which unaffiliated club or leagues compete.
- (N) All Match Officials shall be conscious of Competition rules and act accordingly.
- (O) Referee Assessors and Match Commissioner shall be appointed to selected matches in the S.L.F.A. Competition.

## **Rule 6**

### **CAUTION**

- (a) A caution (yellow card) is a warning from the Referee to a player during a match to sanction unsporting behavior of a less serious nature. (See law 12 of the laws of the game).
- (b) Two cautions received during the same match incurs an expulsion indirect red card and consequently, automatic suspension from the next match, the two cautions that incurred the red is rescinded.

- (c) An Expulsion automatically incurs suspension from the subsequent match, even if imposed in a match that is later abandoned/or annulled. The Disciplinary Committee may extend the duration of the suspension.
- (d) If a player receives a caution in three (3) separate matches of the same S.L.F.A. Competition, he is automatically suspended from the next match in that competition.
- (e) If an abandoned match is replayed, any caution during that match shall be annulled. If the match is not to be replayed, the caution received by the team responsible for causing the match to be abandoned is upheld, if both of the teams are responsible, all of the cautions are upheld.
- (f) Caution issued in a match that is subsequently forfeited shall not be annulled
- (g) If a player is guilty of serious unsporting behavior as defined in Law 12 of the Laws of the Game and is sent off (Direct red card), any other caution he has received in the same match is upheld.

## **Rule 7**

### **DURATION OF MATCHES**

Matches are of sixty (60) minutes duration unless otherwise determined at the discretion of the Referee.

- (a) The match shall be of two equal periods of 30 minutes, unless otherwise mutually agreed among the referee and the two teams. Any agreement to alter the duration of the periods of play (for example, to reduce each half because of insufficient light) must be made before the start of play and must comply with competition rules.
- (b) Players are entitled to an interval at halftime. The halftime interval must not exceed 15 minutes. The duration of the halftime interval may be altered only with the consent of the referee.
- (c) Teams must arrive at the match venue at least one hour before the scheduled starting time.
- (d) A thirty (30) minutes grace period is allowed after the scheduled start of the game.
- (e) Any team arriving after the thirty (30) minutes grace period shall automatically forfeit the game.
- (f) Should No winner be determined after the Completion of regulation time; in cases where there must be a clear winner, a winner shall then be decided through kicks from the penalty mark executed as explained in Law 14 of the FIFA Law of the Game.

## **Rule 8**

### **COMPETITION FORMAT**

- (a) In the Schools Inter District Girls Championship shall be played at the district level
- (b) In the group stage, the last matches in each group shall be played simultaneously.
- (c) If a match is level at the end of normal playing time, no extra time shall be played.
- (d) Two Teams from each group shall qualify to the Round of Eight (8) Quart final Stage,
- (e) The winners of the Quarter Final stage shall advance to the Semi Final Stage,
- (f) The losers of the Semi Final Stage shall play the third place play off
- (g) The winners of the Semi Final Stage shall play for the first and second places

## **Rule 9**

### **CONDUCT OF OFFICIALS, PLAYERS AND SPECTATORS**

#### **(a) Responsibility of Schools**

- i. Every School shall be responsible for ensuring that its Officials, Players, and all persons purporting to be its supporters or followers conduct themselves in an orderly fashion and refrain from violent, threatening, abusive, obscene or provocative behaviour, or language whilst attending a match in which it is involved, whether on its grounds or elsewhere.
- ii. Every School shall be responsible for ensuring that no spectator or unauthorized person is permitted to encroach onto the pitch to throw missiles, bottles or other potentially harmful or dangerous objects at, or on the pitch.
- iii. If in the judgment of the Referee a match is brought about to a premature end because of crowd encroachment or crowd disorder, then the home team shall be liable. This may result in the forfeiture of points from the match and/or the banning from any of the S.L.F.A fixture matches at that venue and/or forfeiture of prizes. However before a final decision is taken, a full investigation shall be conducted.
- iv. Schools are responsible for the safety and security of visiting players and officials at matches played on their home ground.

- v.** If a match is brought to a premature end because a team walks off the field in protest at a decision of the Referee, or a team/Club refuses to continue playing for the same reason, then that team shall forfeit the points from that match and may be suspended from participating in any S.L.F.A. organized or sanctioned matches for at least one full playing season, subsequent to the incident.
- vi.** Any Team which fails to take the field for a match in protest at a decision of the S.L.F.A or the referee or because of disagreement with a decision or ruling of the S.L.F.A or the referee shall be liable to disciplinary action by the S.L.F.A notwithstanding (V) above.
- vii.** Any Team, which withdraws from a competition organized by the S.L.F.A in protest at, or because it disagrees with a decision or ruling of the Disciplinary Committee or Appeal Committee or the S.L.F.A shall be liable to disciplinary action.
- viii.** Any Team which fails to discharge its responsibilities in any respect whatsoever, shall be guilty of misconduct, and liable to be dealt with therefore, except it shall be a defense, if it can show that all events, incidents or occurrences complained of, were the result or circumstances over which it had no control, and that its responsible Officers or Agents had used all due diligence to ensure that its said responsibilities were discharged.
- ix.** /Teams are responsible for ensuring that their players are properly attired in the registered team colours.
- x.** Every Team is liable for improper conduct among its own group of spectators, regardless of the question of culpable conduct or culpable oversight, and depending on the situation, may be fined. Further sanctions may be imposed in the case of serious disturbances.
- xi.** Improper conduct includes violence towards persons or objects, letting off incendiary devices, throwing missiles, displaying insulting or political slogans in any form, uttering insulting words or sounds or invading the field of play.
- xii.** Invading of the field of play is the entry of a spectator or a non-player onto the field without the Referee's permission.
- xiii.** Any team who is guilty of any of the offences specified under this section will be banned for two years, or shall be fined \$1500.00.
- xiv.** The following constitute misconduct by a team and are sanctioned by a maximum fine of \$1000.00:

- a. When several players together make threats or show force against a Match Official
  - b. When three players are sent off during one match.
  - c. When four or more players receive a caution shall receive a sanction by a maximum fine of (\$500.00) or suspension of the player(s) up to one (1) match or points deduction from the team.
- xv. When determining the amount of the fine, the type of competition shall be taken into account.

### **Release of Players for National Team**

- xvi. Teams are obliged to release their registered players from their representative teams for the National Team, if a player is called up by the S.L.F.A. for National duties.
- xvii. The release of players under the terms of this Rule is mandatory for matches for which a duty to release players exist on the basis of a special decision of the S.L.F.A.
- xviii. As a general rule, every player registered for a club or team is obliged to respond affirmatively when called up by the S.L.F.A. if he is eligible to represent.
- xix. A player who is unable to comply with a call – up from the S.L.F.A. that he is eligible to represent on the basis of injury or illness shall, if the S.L.F.A. so requires, agree to undergo a medical examination by a doctor of the S.L.F.A'S choice.
- xx. A player, who has been called up by the S.L.F.A. for one of its representative teams unless otherwise agreed by the S.L.F.A, is not entitled to play for any team which he is registered during the period for which he has been released pursuant to the provisions of this section. This restriction on playing for the club shall, moreover be prolonged by seven (7) days in the event that player for whatsoever reason, did not wish to or was unable to comply with the call – up.
- xxi. If a team refuses to release a player or neglects to do so despite the provisions of this section, the S.L.F.A. shall further more declare any match in which the player took part in to have been lost by the Team concerned. Any points thus gained by the Team in question shall be forfeited. Any match contested according to the system shall be regarded as having been won by the opposing team, irrespective of the score.

- xxii.** Every Club shall be responsible for Health accident and travel insurance cover for all delegation.
- xxiii.** Returning the information requested by the S.L.F.A by the dates specified.
- xxiv.** Attending press Conferences and other official media activities organized by the S.L.F.A in a timely manner.

**(b) Responsibilities of Players**

- i.** Any Player sent off by a Referee in a match for violating the laws of the game, shall be automatically suspended for one match. The Referee shall send an additional report on the matter to the S.L.F.A and the S.L.F.A can impose further disciplinary action against the individual and /or his team.
- ii.** Any Player currently serving a disciplinary ban from an Affiliate Body/Club shall not be allowed to participate in competitions organized by another Affiliate/Body/Club, or represent another Team in competitions of the S.L.F.A.
- iii.** Any Player who, whilst playing in a match for a Team is dismissed from the field of play for violating the laws of the game, commits further misconduct at the same time of dismissal during the remainder of the match or following it, and as a result of such misconduct is subject to a further report of a Referee, shall be subject to further disciplinary action by the S.L.F.A.
- iv.** Any Team who plays as an unregistered player at any time or, a player who has previously registered and played for another team in the same season and has not obtained permission as set out in these rules shall be liable to disciplinary action.
- v.** Any unregistered player shall be suspended automatically pending disciplinary action.
- vi.** Players who have played for any team during the current season and wish to play for another team in the following season **MUST** first obtain a Transfer certificate from the Team they are leaving and endorsed by the S.L.F.A. The transfer period shall be from January 1st – April 30th, for the Competition year.
- vii.** Players can only represent one team and play for one team in the Competition year.
- viii.** In tournaments organized by the S.L.F.A, anyone who allows himself to be registered without first obtaining a Transfer Certificate, or / has been a registered player shall automatically be suspended pending disciplinary action, by the executive of the S.L.F.A.



- ix. Players shall be automatically disqualified from playing if they have more than two matches without being a registered player with the S.L.F.A.
- x. All players shall ensure they are registered with the S.L.F.A. before the names are shown on the match card the teams produce at matches.
- xi. Any player found guilty as in above shall be fined a maximum of \$1000.00 or a twelve (12) month ban from all football related activities.

**(c) Ineligibility**

- i. If a player takes part in an official match despite being ineligible, his team will be sanctioned by forfeiting the match and paying a maximum fine of five hundred (\$500.00).

**(d) Offensive and Racist Behaviour**

**i. Offensive Behaviour:**

Anyone who insults someone in any way, especially by using offensive gestures or language, will be sanctioned with a match suspension. If the perpetrator is a player, he will be suspended from at least two (2) matches; if he is an official he will be suspended from at least four (4) matches. A fine as well as a ban on performing any football related activity may also be pronounced.

- ii. Anyone publicly disparages, discriminates or denigrates someone in a defamatory

- iii. Manner on account of race, colour, language, religion or ethnic, or perpetrates any other racist and/or contemptuous deed, will be subject to match suspension for at least five matches at every level. Furthermore, a playing field (stadium) ban and a fine of at least one thousand dollars (\$1000.00) will be imposed on the perpetrator. If the perpetrator is an official, the fine will be at least one thousand five hundred dollars (\$1500.00).

- iv. If spectators display banners bearing racist slogans, or are guilty of any other racist and /or contemptuous behaviour at a match, the appropriate body will impose a sanction of at least one thousand five hundred dollars (\$1500.00) on the Team or Affiliate that spectator concerned support and force it to play its next official match without spectators. If the spectators cannot be identified as supporters of one or the other Affiliate or Team, the host Team or Affiliate will be sanctioned accordingly. From the team concerned, if identifiable, after the first offence, in case of a second offence, six (6) points will be automatically be deducted, and for a further offence, the team will be relegated. In the case of

matches without points, the team concerned, if identifiable, will be disqualified.

- v. Any spectator who is guilty of any of the offences specified under paragraph two (11) or three (111) of this rule will be banned from entering any playing field (stadium) for at least twelve (12) months.
- vi. If any player, official, an affiliate, or spectator perpetrates any kind of racist or contemptuous deed as described by paragraph 11 or 111 of this article, three points will automatically be deducted.
- vii. Sanctions imposed on the basis of this rule may be reduced or even disregarded if the player, team, club, or affiliate concerned proves that it was not or was only minimally at fault for the offences in question or if other major reasons justify it, particularly if the offences were provoked intentionally to cause a player, team, club or affiliate to be sanctioned in accordance with this rule. The procedure for assessing mitigating circumstances shall be governed by this rule and regulation or, in cases where this rule and regulation is not applicable, the disciplinary regulations of the FIFA, CONCACAF or C.F.U. will be applicable.
- viii. All affiliates are required to incorporate the provisions of this rule into their competition rules and to enforce the sanctions stipulated. If any affiliate infringes this article, it will be excluded from National Competition for one (1) year.
- ix. Anyone who is involved in a brawl or aggressive behaviour shall be sanctioned with a suspension for at least one (1) year. If it is not possible to identify the perpetrator (s) the body, or club, or team, will be sanctioned by the Association to which the aggressors belong.

**(e) Unidentified Aggressors**

- i. If in the case of violence, if is not possible to identify the perpetrators the body will sanction the Club or Association to which the aggressors belong

**Rule 10**

**RESPONSIBILITIES OF THE HOME TEAM**

**1 GROUNDS**

- (a) The home authority is responsible for marking and preparation of its grounds for S.L.FA matches. In accordance with the Fixtures, the Club/Team, which appears first for scheduled games, shall be the home team.

- (b) In the event that the home authority/team is unable to mark, and prepare its grounds the General Secretary, must be notified no later than four (4) hours before the commencement of the match.
- (c) Ground preparation shall include:
- proper markings (all markings)
  - erection of corner poles with flags
  - properly secured nets
  - an even surface
  - cutting of grass to an acceptable height (Referee to determine)
  - access to the ground
- (d) If any doubt arises as to the field of play after the visiting club's arrival at the match venue, the Referee decides on the field of play, itself whether or not it is fit for play.
- (e) If the Referee deems the grounds to be unsuitable for play, then the home team will have automatically forfeited the match at a score of 3-0.
- (f) Every Team must take every precaution to ensure that its ground is in a fit playing condition. In the event of doubt regarding the condition of the pitch one day before the match, the home team shall immediately notify the S.L.F.A to enable the Referee to conduct a ground inspection.

## **2 THE TECHNICAL AREA**

- (a) The technical Area extends one (1) meter on either side of the designated seated area and extends forward up to a distance of one (1) meter from the touchline.
- (b) It is recommended that markings are used to define this area.
- (c) The number of persons permitted to occupy the technical area is defined by the competition rules.
- (d) The occupants of the technical area are identified before the beginning of the match in accordance with the competition rules.
- (e) Only one person at a time is authorized to convey tactical instructions from the technical area.
- (f) The coach and other officials must remain within its confines except in special circumstances, (for example a physiotherapist or doctor entering the field of play with the referee's permission, to assess an injured player.

- (g) The coach and other occupants of the technical area must behave in a responsible manner.

## **Rule 11**

### **TRANSPORTATION**

- (a) Club/Team is responsible for the cost of transportation to all game venues.

## **Rule 12**

### **EQUIPMENT**

- (a) All teams must be uniformly and neatly attired in the colours submitted to the S.L.F.A. In the event of a similarity of colours, the home team must alter its colours.
- (b) In all matches, teams must be properly attired. All teams must have their uniforms numbered. Teams, which are considered to be improperly attired, shall be fined one hundred dollars (\$ 100.00). The Referee shall decide on the suitability of the attire.
- (c) At matches organized by the S.L.F.A., each team must submit a suitable ball to the officiating Referee.
- (d) On a date and a place to be determined by the S.L.F.A organization Committee, all teams participating in the competition shall present the Committee with a sample of the official and reserve outfit shirts, shorts, socks and goal keepers kit etc. for approval as well as goal keepers gloves and cup that they intend to use during the Final Competition.
- (e) The participating team shall comply with the current Rules and Regulation. Players and officials are not allowed to visibly display political religious, commercial or personal messages in any language or form on their playing kit equipment or body.
- (f) Each team shall have an official and reserve team kit, which shall be declared on the team colours and on the reserve kit (shirts,shorts and socks) shall be noticeably different from and contrast with the colour of the official team kit (shirts, shorts and soaks). The reserve kit, including the goalkeeper kit, shall also be taken to every match. Only their colour may be worn at matches.

## **Rule 13**

## POSTPONEMENT OF MATCHES

- (a) Any request by a School for a postponement of a match must be in writing, stating the reason, **AT LEAST** seven (7) days before the scheduled day of play. The S.L.F.A shall respond within forty-eight (48) hours of receipt of the request.
- (b) In emergency situations, it shall be no later than 48hrs. The Executive may waive (a) above.
- (c) The Executive will inform the School whether the postponement was granted or denied.
- (d) A Request for a postponement of matches to accommodate players who play in more than one (1) competition shall not be entertained or considered.

## **Rule 14**

### PROTEST

- (a) A protest is an objection taken on the field of play by a team to some measure which the team considers being contrary to established laws, rules and regulations and to which the team is forced to submit involuntarily.
- (b) Protest against the eligibility of a player taking part in any matches shall be submitted in writing to the referee or the Match Commissioner no later than three (3) hours after the games and followed up by a written report, including the original protest to be sent to the General Secretary, no later than 24 hours after the completion of the match in question
- (c) Once the winning teams of the competition have been proclaimed, any protest about the sport procedure following or during the competition shall be disregarded.
- (d) All protest must be lodged with the General Secretary of the S.L.F.A within forty-eight (48) hours of the incident.
- (e) Protest shall be heard by the Complaints Committee; the committee shall meet within seven (7) days of lodging of the protest with the General Secretary of the S.L.F.A.
- (f) The Team shall have a right of an appeal to the Appeals Committee of the S.L.F.A. All appeals must be accompanied by a fee of two hundred dollars (\$ 200.00) which is non-refundable.
- (g) Other complaints shall be dealt with by the Executive of the S.L.F.A or the Complaints Committee as deemed fit.

- (h) No protests may be made against the Referee's decision on points of fact connected with play, such decision being final.
- (i) Teams participating in the Competition shall not bring disputes with S.L.F.A. before a Court of Justice and shall agree to submit any such disputes without reservation to the Jurisdiction of the competent authority of S.L.F.A., C.F.U., CONCACAF and FIFA.
- (j) Any protest relating to the ground, goal post, or bars, or any other appurtenances of the game shall not be considered by the team unless an objection has been lodged with the Referee at least one hour before the official time of the kick Off. The Referee shall require the Home Team to correct the cause of objection, if it is possible, without unduly delaying the progress of the match

## **Rule 15**

### **MATCH SUSPENSION**

- (a) For Team (s) or Player (s) a suspension from a match is a ban on taking part in a future match (s) or competition (s) and or attending it in the area immediately surrounding the field of play.
- (b) The suspension is imposed in terms of matches, days or months. Unless otherwise specified, it may not exceed 24 matches or 24 months.
- (c) As a general rule, every match suspension (of players and other persons) is carried over from one round to the next in the same competition.
- (d) If the suspension is to be served in terms of matches, only matches actually played count towards execution of a suspension. If a match is abandoned, cancelled or forfeited, suspension is only considered to have been served if the team to which the suspended player belongs is not responsible for the facts that led to the abandonment, cancellation or forfeit of the match.
- (e) If a suspension is combined with a fine, the suspension may be prolonged until the fine is paid in full.
- (f) Protests against any incidents that occur during a match shall be directed to the referee by the team captain immediately after the disputed incident and before play has been resumed the protest shall be confirmed in writing to the match commissioner or the S.L.F.A representative at the match by the head of the team delegation no later than three (3) hours after the match in question.

## **Rule 16**

### **WITHDRAWALS**

1. A team having entered the competition is obliged to play all their matches until they are eliminated. After entering the tournament, a team that fails to participate shall be penalized as follows, except in the unforeseen circumstances.
2. **If a withdrawal takes place:**
  - (a) After entering the competition but before the date of the draw for the first round, a fine of \$200.00 is applied.
  - (b) On or after the date of the draw but before the date of the first match of the Tournament, a fine of \$300.00 is applied.
  - (c) Anytime during the Qualifying competition, a fine of five hundred (\$500.00) is applied.
  - (d) Depending on the circumstances and decision of the S.L.F.A. Executive, a team withdrawing at any stage of the competition may be ordered to reimburse the S.L.F.A. any expenses it may have incurred for the withdrawing team as a result of its proposed involvement in the competition and also pay compensation for any damages or loss arising from its withdrawal
  - (e) If a School refuses to play or is responsible for a match not taking place or not being played in full, the Competition Committee, or Executive of the S.L.F.A shall declare the match forfeited and/or disqualify the team concerned in combination
  - (f) Exceptionally, the Competition Committee, or Executive can validate the result as it stood at the moment when the match was abandoned if the match result was to the detriment of the Team responsible for the match being abandoned.
  - (g) In all cases, the Competition Committee, or the Executive of the S.L.F.A can take further measures if the circumstances so justify.
  - (h) A Team which refuses to play or is responsible for a match not taking place or not being played in full, loses all right to payment and points from S.L.F.A.
  - (i) Upon receipt of reasoned and well-documented request from the club or clubs concerned, the S.L.F.A. Executive may set an amount of compensation due for the financial loss.
  - (j) Any team which fails to report for two matches shall be deemed to have withdrawn from the competition, and shall be automatically disqualified from the Competition in progress.

## **Rule 17**

### **ECONOMIC SANCTION**

- (a) If through the fault of any Team, a match cannot take place or be played in its entirety, the organizing Committee shall declare the match to be forfeited (awarding victory and the resultant three points to the opposing team, as well as a score of 3-0 or more if the opposing team has already achieved a greater margin of victory and shall eliminate the guilty team from the Competition).
- (b) If the suspension of a match was the result of negligence on the part of the stadium authorities the stadium in which an interrupted match is held may be suspended for the remaining games of the Tournament.
- (ii) If through the fault of both teams a match cannot take place or the organizing Committee shall declare the match forfeited, the team loses all right.
- (c) If a game is suspended due to withdrawal, the team(s) refusing to complete the match shall be ineligible to participate in the next two Tournaments.
- (d) Any other infringement of these Regulations whether by players, referees officials Coaches or officers that are punishable by economic sanctions shall be reported to the secretariat of the S.L.F.A for consideration by the Executive Committee.
- (e) The appropriate body thereof must pay all economic penalties no later than thirty (30) days after notification may unless otherwise specified the total amount of all fines will accrue to S.L.F.A.
- (f) Economic Sanction shall include all cost associated with the planning of the match.

## **Rule 18**

### **ABANDONED MATCH**

- (a) If two teams have equal abandoned games, the replay matches will be played on neutral grounds, at the expense of the teams.
- (b) If the match is abandoned before the end of normal time or during any extra time because the field is not fit for play, or because of the weather conditions a 90 minute replay must in principle be played on the reserved day set by the Executive of the S.L.F.A.
- (c) If the match cannot commence or is abandoned before the end of normal time or during any extra time for reasons beyond control, a 90 minute replay must in principle be played on an alternative date set by the Executive of the S.L.F.A.



- (d) Except when the previous of 16 (a), (b), (c), apply each Team/Club shall bear its own expenses. If the match cannot take place at all for reasons beyond control, the Club/ Team shall bear its own expenses.
- (e) If a team refuses to play a match, or, to continue playing one, which it has began it will be sanctioned with a minimum fine of \$500.00 and will, in principle forfeit the match.
- (f) In serious cases, the team will also be disqualified from the Competition in progress.

## **Rule 19**

### **REPORT OF MISCONDUCT**

- (a) It is the duty of the members of the General Council of the S.L.F.A., Officials of Affiliates, Officials of Clubs and Referees, to report to the Association all cases of misconduct likely to bring the game into disrepute, including misconduct, which has brought it into disrepute.
- (b) Any misconduct towards a Match Official away from the field of play will be dealt with as if the offense has been committed on the field. The offense must be related to the game.
- (c) Assistant Referees who observe incidents on the field of play, which are likely to bring the game into disrepute are required to immediately, report such incident to the Referee if such incident have not come to his attention.
- (d) If a Referee fails to report misconduct, which comes under his notice, and is proved to the satisfaction of the Association that such misconduct required further investigation, then, the registration of that Referee may be withdrawn.
- (e) The Executive reserves the right to take action in cases of misconduct brought to its attention by the police authorities.
- (f) It is the duty of the Referee to report every case of misconduct, which has brought the Game into disrepute.

## **Rule 20**

### **DEFINITION OF MISCONDUCT**

Misconduct, shall be deemed to have occurred if a Team, Official of any Club, Referee or Assistant Referee or Player is proven to the satisfaction of the Executive of the S.L.F.A to have done, permitted to have done or assisted in doing or permitting any of the following:

- (a) Playing with any suspended member of the S.L.F.A.

- (b) Offering or attempting to offer, either directly or indirectly, any consideration whatsoever to another Club or to any Official, Member or Player of a club or to any Referee or Assistant Referee with a view to influencing the result of any match or to accept such consideration.
- (c) Allowing any Official, Referee, Assistant Referee or Player under suspension to act as a Referee or to perform any duties from the execution of which, he has been suspended.
- (d) Committing any act or making any statement either verbally or in writing or being responsible for conduct or any matter which in the opinion of the Executive of the S.L.F.A is considered to be insulting, improper, ungentlemanly behavior or likely to bring the game into disrepute.
- (e) Violations of any of the sections of these Rules and Regulations for competition in 2014.
- (f) Violations of any of the Laws of the Game for 2013/2014 as set out by FIFA.

**Misconduct against opponents or persons other than match Officials**

1. A direct red card shall be suspended as follows:

- (a) One match for denying the opposing team a clear goal-scoring opportunity (particularly by deliberately handling the ball);
- (b) At least one match for serious foul play (particularly in the case of excessive or brute force);
- (c) At least one match for unsporting conduct towards an opponent or a person other than a match official.
- (d) At least two matches for assaulting (elbowing, punching, kicking etc.) an opponent or a person other than a match official.
- (e) At least six matches for spitting at an opponent or a person other than a match official.

2. A fine may also be imposed in all cases.

**Misconduct against match officials**

1. Including the automatic suspension incurred , the overall suspension imposed on any person receiving a direct red card shall be for:

- (a) At least four matches for unsporting conduct towards a match official (not withstanding any other rule in this regulation.
- (b) At least twelve (12) months for assaulting (elbowing, punching, kicking etc.) a match official;
- (c) At least 12 months for spitting at a match official.

## **Rule 21**

### **PENALTIES IN RELATION TO MISCONDUCT**

1. If the Disciplinary Committee is satisfied that a charge of misconduct has been proven, the Committee shall have the power to order that the offending Club or person be:
  - (a) Fined (with or without suspension)
  - (b) Warned
  - (c) Asked to Return awards
  - (d) Suspended (Match Suspension)
  - (e) Cautioned
  - (f) Debarred from playing matches on their home ground.
  - (g) Reprimanded
  - (h) Dealt with in any other manner as prescribed by the FIFA Disciplinary Code.
  - (i) Banned on taking part in any football related activity.
  - (j) Excluded from a competition.
  - (k) Expulsion
  - (l) Forfeit

**Fine:**

- (a) A fine is issued in Eastern Caribbean Dollars. It shall be paid in the same currency.
- (b) A fine shall not be less than three hundred dollars (\$300), or in the case of a competition subject to an age limit, not less than two hundred dollars (\$200).

- (c) The body that imposes the fine decides the terms and time limits for payment.
- (d) Teams are jointly liable for fines imposed on representative team players and officials. The fact that a person has left a club does not cancel out joint liability.

**Warning:**

- (a) A warning is a reminder of the substance of a disciplinary rule allied with the threat of a sanction in the event of a further infringement.

**Exclusion from a competition:**

- (a) Exclusion is the deprivation of the right of a Team/Club to take part in the current / or a future competition

**Reprimand:**

- (a) A reprimand is an official written pronouncement of disapproval sent to the perpetrator of an infringement.

**Return of awards:**

- (a) A person or a team required to return an award shall return the benefits received, in particular sums of money and symbolic objects (medals, trophies etc.)

**Ban on Taking Part in any football related activity:**

- (a) A person may be banned from taking part in any kind of Football related activity, administrative, sports, or any other.
- (b) The Executive of the S.L.F.A shall have the power to suspend any Club or person who defaults in the payment of a fine by fourteen (14) days. The Executive shall decide the conditions of such a suspension, The Club or player shall be reinstated on the payment of the fine.

**Expulsion:**

- (a) An expulsion is the order given by the referee to someone to leave the field of play and its surrounding, including the substitute's bench during a match the person who had been sent off may be allowed into the stands unless he is serving a stadium ban.
- (b) Expulsion takes the form of a red card for players the red card is regarded as direct if it sanctions serious unsporting behavior as defined by Law 12 of the

Laws of the Game, it is regarded as indirect if it is the result of an accumulation of two yellow cards.

- (c) An official who has been sent off may give instruction to the person replacing him on the Substitutes bench he shall however ensure that he does not disturb the spectators or disrupt the flow of play.
- (d) An expulsion automatically incurs suspension from the subsequent match, even if imposed in a match that is later abandoned and/or annulled. The Disciplinary Committee may extend the duration of the Suspension forfeit.

**Forfeit:**

- (a) Teams sanctioned with a forfeit are considered to have lost the match by 3-0
- (b) If the goals difference at the end of the match in question greater than 3-0 the result on the pitch is upheld.

**Rule 22**

**RIGHT TO PERSONAL HEARING**

- (a) Any member of the S.L.F.A or any person charged with misconduct shall be furnished with details in writing of such charge, which shall be sent by an appropriate means of communication by the S.L.F.A The Club or person shall be notified of the date and place of a hearing of the matter by the Disciplinary Committee of the S.L.F.A through the General Secretary.
- (b) Within fourteen (14) days from the communication, thereof, the School or person so charged shall appear before the Disciplinary Committee for a hearing on the matter and shall answer any questions that the Committee may ask by way of examination, and shall produce any books or paper they consider necessary.
- (c) The School/Team or person charged shall have the right to cross examine any witnesses who give evidence in support of the charge and shall have the right to give and call evidence in rebuttal of the charge.
- (d) If a School/Team or person fails to attend a hearing or refuses to answer any questions asked by the Disciplinary Committee, or neglects to produce any books or papers, then the Committee shall investigate and adjudicate upon the charge or allegation, in such manner and upon such evidence as they deem expedient.
- (e) Upon the completion of the evidence, the hearing shall be closed and the decision of the Committee shall subsequently be communicated in writing

through the General Secretary to the School or person charged, and any other party concerned.

- (f) Violations of the Laws of the Game dealt with by the S.L.F.A under Rule 2 of the rules and regulation for competition in 2014 shall not be subject to an appeal. For all other violations and/or breach of the Rule dealt with by the S.L.F.A, there shall be a right of appeal to the Appeals Committee.

## **Rule 23**

### **UNLAWFULLY INFLUENCING MATCH RESULTS**

- (a) Any School/Team, or player, or spectator who conspires, and or attempt to influence the result of a match in a manner contrary to sporting ethics shall be sanctioned with a match suspension or a ban on taking part in any football related activity as well as a fine. In serious cases, a lifetime ban on taking part in any football related activity shall be imposed.
- (b) In the case of a player or an official unlawfully influencing the result of a match in accordance with the rules, the School team to which the player or official belongs shall be fined. Serious offences may be sanctioned with expulsion from a competition, demotion to a lower division, a point deduction and the return of awards.
- (c) Anyone who uses violence or threats to pressurize a match official into taking certain action and/ or to hinder him/her in any other way from acting freely will be sanctioned with a fine of at least \$2000.00 and/or ban of two years.
- (d) Betting by officials of the S.L.F.A team officials, match officials, players, or any other party directly involved in matches is prohibited.

---

## **Rule 24**

### **APPEALS**

- (a) Appeals against the decisions of the Disciplinary Committee, or the Competition Committee or The Executive of the St. Lucia Football Association shall be made to the *Appeals Committee* stating its intention to do so in writing within three days of notification of the decision.
- (b) Every appeal under this article **MUST** be made within seven (7) days of the relevant decision.
- (c) After hearing an appeal, the decision of the Disciplinary Committee or Executive of the S.L.F.A may be upheld or reversed and the Committee hearing the appeal shall

determine who must bear the expenses of the appeal. The decision of the Appeals Committee shall be binding on all parties concerned.

- (d) Reasons for the appeal must be given in writing within a further time limit of seven days. This seven day period begins after the first deadline of three days has expired.
- (e) The appellant shall submit six (6) copies of his petition of appeal to the S.L.F.A. Appeals Committee.

## **Rule 25**

### **COLOURS**

- (a) Kits used by the School must be registered, and approved by the Executive of the S.L.F.A. at the time of registration
- (b) The home team should always wear the official first-choice kit approved by the Executive. If the referee decides on the spot that the colours of the two teams could lead to confusion, the home team must wear other colours for reasons of practicality. If clashes still exists and the team officials are unable to agree, the Executive of the S.L.F.A./Match Commissioner will decide on the colours.
- (c) No kits containing the combined colours of National team shall be accepted for registration by the S.L.F.A.
- (d) Club shall not wear combined colours of the National team to participate in any competition organize or sanctioned by the S.L.F.A.

## **Rule 26**

### **Disciplinary Committee**

**1.** The chairman of the Disciplinary Committee may take the following decisions alone:

- (a) Suspend a person for up to three matches or for up to two months;
- (b) Pronounce a fine of up to two hundred dollars (\$200.00)
- (c) Rule on extending a sanction
- (d) Settle disputes arising from objections to members of the Disciplinary Committee;
- (e) Pronouncing alter and annul provisional measures

2. Whenever the Disciplinary Committee meets on such occasions as a final competition, the chairman may decide that the decisions mentioned under par. 1 be taken by the committee.
3. In cases of infringement of these Regulations or unsporting behavior on the part of the participating, Team their players officers and directors or in any kind of incident the S.L.F.A. Disciplinary Committee shall be empowered to
  - (a) Admonish, sanction, fine, suspend, or disqualify players referees, teams, officials or coaches
  - (b) Take action in accordance with the S.L.F.A and F.I.F.A
  - (c) Disciplinary measures against any person or team(s) which may violate Tournament Regulations the laws of the Game, or the rules of fair play.
  - (d) Sanction players' team officials, Coaches, Physicians and other Team or Selection officer who are deemed guilty of provocation.
  - (e) Prohibit violations from participating in a specific number of S.L.F.A-organized tournaments in which they might otherwise have participated.
  - (f) Breach of regulations or unsporting behaviour on the part of participating teams or their officials shall be reported by the Disciplinary Committee of the Executive Committee of the S.L.F.A for application of such sanctions as it may deem appropriate.
  - (g) When taking a decision the Disciplinary Committee shall refer to the report made by the referee assistant referees and fourth official, match Commissioner, referee inspector, general Coordinator, technical delegate, security officer, and other S.L.F.A officials present. It may also refer to television and video recordings. They may be used as evidence but only as far as the disciplinary aspect of the case being dealt with are concerned and shall not affect a referee's decision regarding facts connected with play.
  - (h) The Disciplinary Committee may convene a personal hearing and will decide the procedure to the followed.
  - (i) The following decisions of the Disciplinary Committee shall not be subject to appeal.



- i. Cautions and censures imposed on players referees, assistant referees, fourth officials, delegation officials or other persons teams
  - ii. Suspensions from up to two matches imposed on players referees, assistant referees, fourth official, delegation officials or other persons.
  - iii. Fines imposed on player's delegations, referees, assistant referees, fourth official delegation officials or other persons (not exceeding \$300.00) or on Team (not exceeding \$500.00).
  - iv. Appeal against any other decision taken by the Disciplinary Committee shall be lodged with the Appeal Committee
- (j) The Appropriate Authority under the provisions of its own regulations shall punish any other offenses that may be Committed during the Course of the Tournament by team officers, technicians or other personnel. For this purpose the Disciplinary Committee shall refer to the appropriate Authority referees report of the match in question the Authority will, in turn report back to the S.L.F.A on the resolution of the matter and any disciplinary action taken. Jurisdiction of the Chairman ruling alone.

## **Rule 27**

### **Appeal Committee.**

1. The chairman of the Appeals Committee may take the following decisions alone:
  - (a) Decide on a appeal against a decision to extend a sanction
  - (b) Resolve disputes arising from objections to members of the Appeal Committee.
  - (c) Rule on appeals against provisional decisions passed by the chairman of the Disciplinary Committee
  - (d) Pronounce, alter and annul provisional measures.

2. Whenever the Appeals Committee meets on such occasions as a final completion, the chairman may decide that the decisions mentioned under par. 1 be taken by the committee.
3.
  - (a) The Appeal Committee shall hear appeals lodged against decisions passed by the Disciplinary Committee which are not final according to these regulations.
  - (b) The procedure to be applied by the Appeal Committee is defined in the Regulations governing the S.L.F.A. Appeal Committee function.
  - (c) The Appeal Committee shall reach its decisions on the basis of the document and other means of evidence contained in the Disciplinary Committee file. However, the Appeal Committee may, if necessary, resort to further evidence (including television and video recordings etc.) which it considers relevant.
  - (d) Decisions pronounced by the Appeal Committee are final.

## **Rule 28**

### **DISCIPLINARY LAW AND PROCEDURES**

- (a) These Rules and Regulations apply to all Disciplinary Offences Committed by clubs, officials or organizers or other individuals, exercising a function at a match on behalf of the S.L.F.A. or Team/Club, unless those Regulations stipulate otherwise
- (b) Participating players must agree to comply with the Law of the Game, S.L.F.A. Constitution, must notably respect the spirit of fair play and non-violence, and behave accordingly;
- (c) Refrain from any activities that endanger the integrity of the S.L.F.A. Competitions or bring the sport of football into disrepute
- (d) Those Rules and Regulations also govern the release of players to National Teams and players' eligibility to play for such teams in accordance with the provisions of the Regulations. These provisions are binding for all Team, Club, league etc.

## **Rule 29**

### **MATCH BALLS**

- (a) All Clubs/Organizations must present a match ball to the Referee half an hour before the start of the match

- (b) The referee shall choose a ball, which shall be deemed the match ball.

### **Rule 30**

#### **HOSTING S.L.F.A. MATCHES**

The Host shall retain the total gate receipt and all benefits from the matches and shall pay all expenses incurred in the organization of the match or tournament, including but not limited to:

- (a) Transportation for up to fifteen (15) persons of the visiting teams, and Match Officials otherwise agreed by the parties;
  
- (b) The host shall retain all revenue from
  - i. Admission tickets sales
  - ii. Concessions granted by the organizing committee for the sale of food and beverages
  - iii. Other rights specifically granted by S.L.F.A.
  - iv.
  
- (c) During the tournament, the FIFA Flag, the Fair Play, the S.L.F.A. Flag, and the Flag of the host affiliate, should be flown at every match inside the ground. The FIFA Anthem shall be played while the teams are entering the field, followed by the National Anthem.

### **Rule 31**

#### **MATTERS NOT PROVIDED FOR**

- (a) All matters not provided for, under these Rules and Regulations, shall be settled by the rules of S.L.F.A.

### **Rule 32**

#### **SCOPE OF APPLICATION, NATURAL AND LEGAL PERSONS**

The following are subjects to these Rules and Regulations

- (a) Leagues
- (b) Clubs

- (c) Organizations
- (d) Officials
- (e) Players
- (f) Match officials
- (g) Licensed match and players agents
- (h) Anyone with the authorization from S.L.F.A. in particular with a match, Competition or other event organized by the S.L.F.A.
- (i) Spectators

## **Rule 33**

### **Organizing Committee**

- (a) The organizing Committee for the Tournament appointed by the S.L.F.A and the Ministry of Youth Development and Sports is responsible for the organization of the Competition.
- (b) The Organizing Committee may, if deemed necessary establish a bureau and/or a Sub-committee to deal with urgent matters. Any decision taken by the bureau or Sub-committee shall enter into force immediately but shall be subject to confirmation by the Executive Committee of its next meeting.
- (c) The Organizing Committee shall, amongst other matters be responsible for:
  - i. All Phases:**
    - a) Imposing fines specifically provided for by these regulations.
    - b) Dealing with protests
    - c) Appointing match Commissioners and/or security officers
    - d) Deciding which laboratories, if any will carry out doping analysis;
    - e) Dealing with breaches of the doping regulations;
    - f) Setting cases of force majured
    - g) Deciding which matches, if any, will be subject to doping test
  - ii. Technical Matters:**
    - a) Forming Groups
    - b) Supervising general preparation deciding the match system, the draws and forming groups;
    - c) After Consultation with the Executive Committee, fixing the duties and venues for the matters
    - d) Determining kick-off times
    - e) Choosing the official football and the stipulated technical material;
    - f) The organizing Committee, decision shall be final.

## **Rule 34**

**COMMERCIAL REFERENCE TO EVENT AND  
ADVERTISING PROVISIONS**

- (a) Participating Teams shall agree as a condition of their participation that the terms, National League, the Senior Club Champions, the National Youth Tournaments, the National women League and their equivalent, abbreviated or as Translated into other languages, may only be used by such team in a sporting context with no Commercial implications. The S.L.F.A owns the copyright for all these terms.
- (b) The participating Teams shall also agree to abide by any advertising provisions issued by the S.L.F.A that s not in conflict with their own domestic regulations.

**Rule 35**

**COMPENTENCE OF S.L.F.A**

- (a) Without prejudice to the right of any player or club to seek redress before a civil Court for employment related disputes the S.L.F.A is competent to hear.

**Rule 36**

**DEFINITIONS**

- (a) **Team:** Any School which has registered to play School Competitions in 2014 and is subject to the Rules and Regulation for Competitions in 2015.
- (b) **Player:** Any person registered to play for a Team
- (c) **Official:** Anyone with the exception of players, performing an activity connected with football at the S.L.F.A. or Team regardless of his title, the type of activity (administrative sporting or any other)
- (d) **Match official:** The referee, assistant referees, fourth official, match commissioner, referee inspector, the persons in charge of safety, and other persons appointed by the S.L.F.A. to assure responsibility in connection with a match.
- (e) **Official Match:** A match organized under the auspices of S.L.F.A. for all of the team in its sphere of operation; the score has an effect on the rights of participation in other competitions unless the regulations in question stipulate otherwise.
- (f) **S.L.F.A. :** Saint Lucia Football Association

## **Rule 37**

### **Gender and Number**

- (a) Terms referring to natural persons are applicable to both genders. Any term in the singular applies to the plural and vice-versa.

## **Rule 38**

### **Anti Doping**

- (a) Players, other individuals, organizations and entities shall be responsible for knowing what constitutes an anti-doping rule violation and the substances and Methods that have been included in the Prohibited List.
- (b) Players are obliged to undergo doping tests as set forth in these Regulations. In particular, every Player designated to undergo a doping test by a responsible Official, whether as a result of Target Testing or drawing by lots, is obliged to provide a urine Sample and, if requested, a blood Sample, to undergo any Medical examination that the responsible Official deems necessary and to cooperate with the latter in this respect.
- (c) The Player's rights include the right to:
- i. Have the team doctor or other representative and, as required, an interpreter present;
  - ii. Be informed and ask for additional information about the Sample Collection process.
- (d) The Player's obligations include the requirement to:
- i. Remain within direct observation of the FIFA Doping Control Officer, his assistant or the Chaperone at all times from the point of notification until completion of the Sample collection;
  - ii. Comply with Sample collection procedures (the Player shall be advised of the possible consequences of failure to comply);
  - iii. Report immediately for a test, unless there are valid reasons for a delay, as determined in accordance with Annexe D
- (e) Every Player/team that has been identified for inclusion in a national or international Registered Testing Pool is obliged to provide whereabouts information as set forth in Annexe C. Players may delegate the whereabouts provision to a designated team representative.

## **Rule 39**

### **TIES**

**(a)** If two or more teams are equal on points (including ties among second or the third place teams) the manner in which teams will advance to the next round will be resolved as followed and in the order indicated

**(b)** Goal difference

- i.** The number of goals scored (excluding goals awarded for defaulted matches).
- ii.** The results of the match played between the teams equal on points.
- iii.** Replay of the match
- iv.** Toss of a coin

**(c)** Points System

- i.** Win – three (3) points
- ii.** Draw – one (1) point
- iii.** Loss – zero (0) no point